

Sponsors

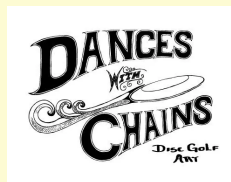
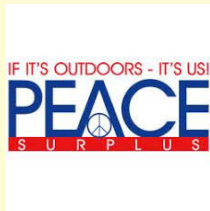
Title Sponsor - Aspen Sports

The title sponsor for this years event is once again Aspen Sports. Aspen Sports has been the sponsor of the Treebash for multiple years, has been a great supporter of local disc golf, and always has a great selection of plastic and other outdoors items on hand. Check them out this weekend lcoated at 15 North San Fransisco Street and let them know that the you're in town for the Treebash!



Gold Sponsors

Peace Surplus, HomeCo, Infinite Discs, Innova Champion Discs, H&R Septic, Dances with Chains, Flagstaff Real Estate Professionals



Silver Sponsors

Findlay Toyota, Jacquart Events, Fort Tuthill County Park

Hole Sponsors

Mason Hults, Blues Brothers, Stan Johnson, Heaths Auto, G. Scott Carle, Sublime Dzine Digital Design, Nick Allen, Robert Lake, Tom and Brad Cislo, Jeff Jacquart, Spencer Hunter, Stacey Briscoe, Alvin Ashley

If you see a sponsor this weekend please tell them thank you for continuing growth of disc golf in Flagstaff.

Pools and schedule

To comply with the City of Flagstaff and PDGA guidelines the 22nd Annual Aspen Sports Treebash Open has made some changes to the way the event will be run. The amateur fields will play their respective round Friday, the 9th and Saturday, the 10th. The pro fields will play their rounds Saturday, the 10th in the afternoon and Sunday the 11th all day. For pool assignments and course schedules please refer to the tables below. Please note that there are two different versions of Thorpe Park disc golf course. When playing your round please refer to the correct version of the maps as the course layout, hole rules, and distances vary between the two layouts.

Pools

A pool - MPO

B pool - MP40, MP50, MP60 & FPO

C pool - MA1, MA40

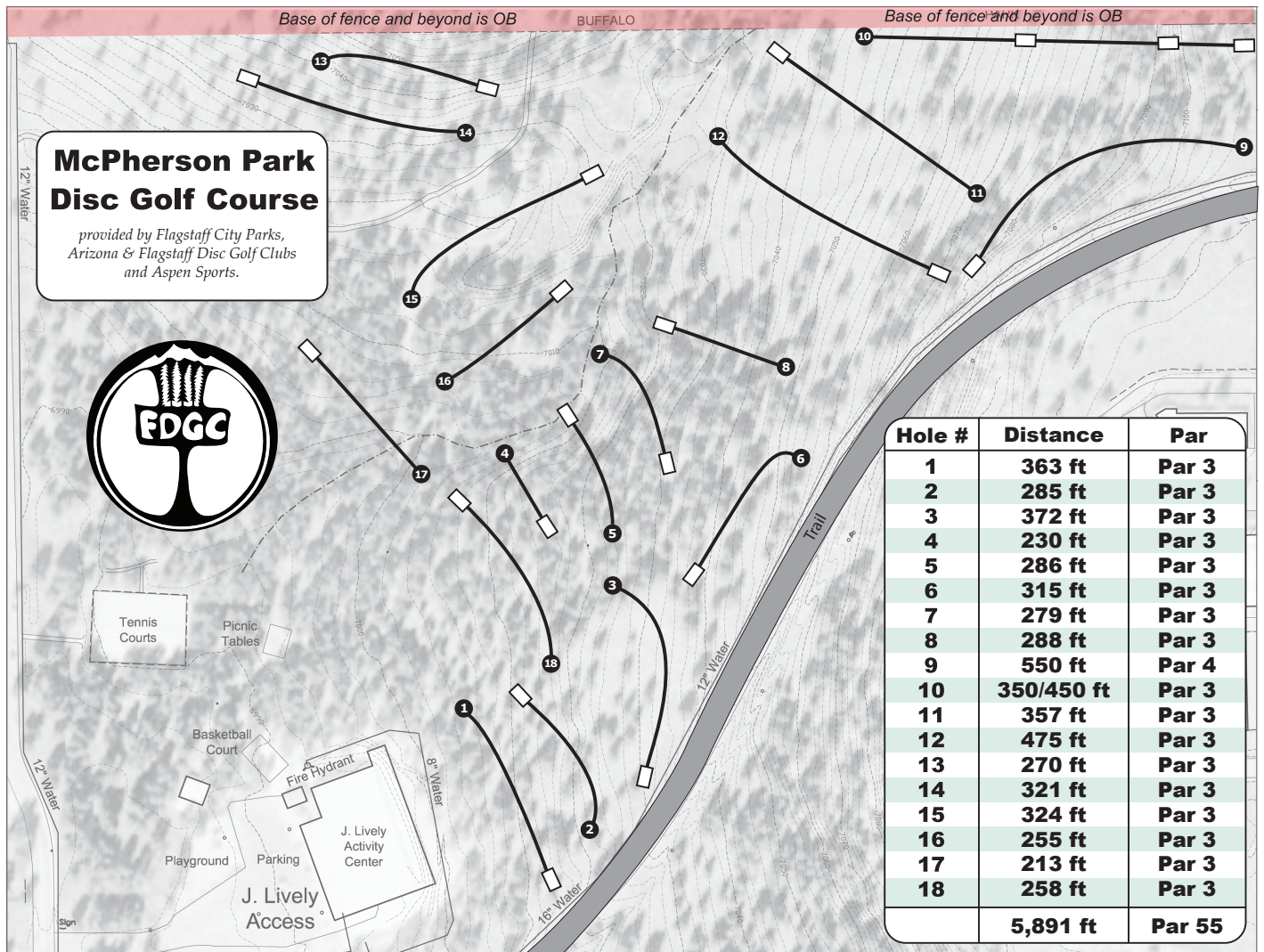
D pool - FA1, FA2, FA3, MA2, MA3, MA50 & MA60

Course Schedule

		Friday	Saturday	Sunday
AM	Mcpherson	D pool	C pool	
	Tuthill			B pool
	Thorpe	C pool	D pool	
	Thorpe XL			A pool
PM	Mcpherson	D pool		
	Tuthill		A pool	B pool
	Thorpe			
	Thorpe XL	C pool	B pool	A pool

McPherson Park

C & D pool



Course Rules:

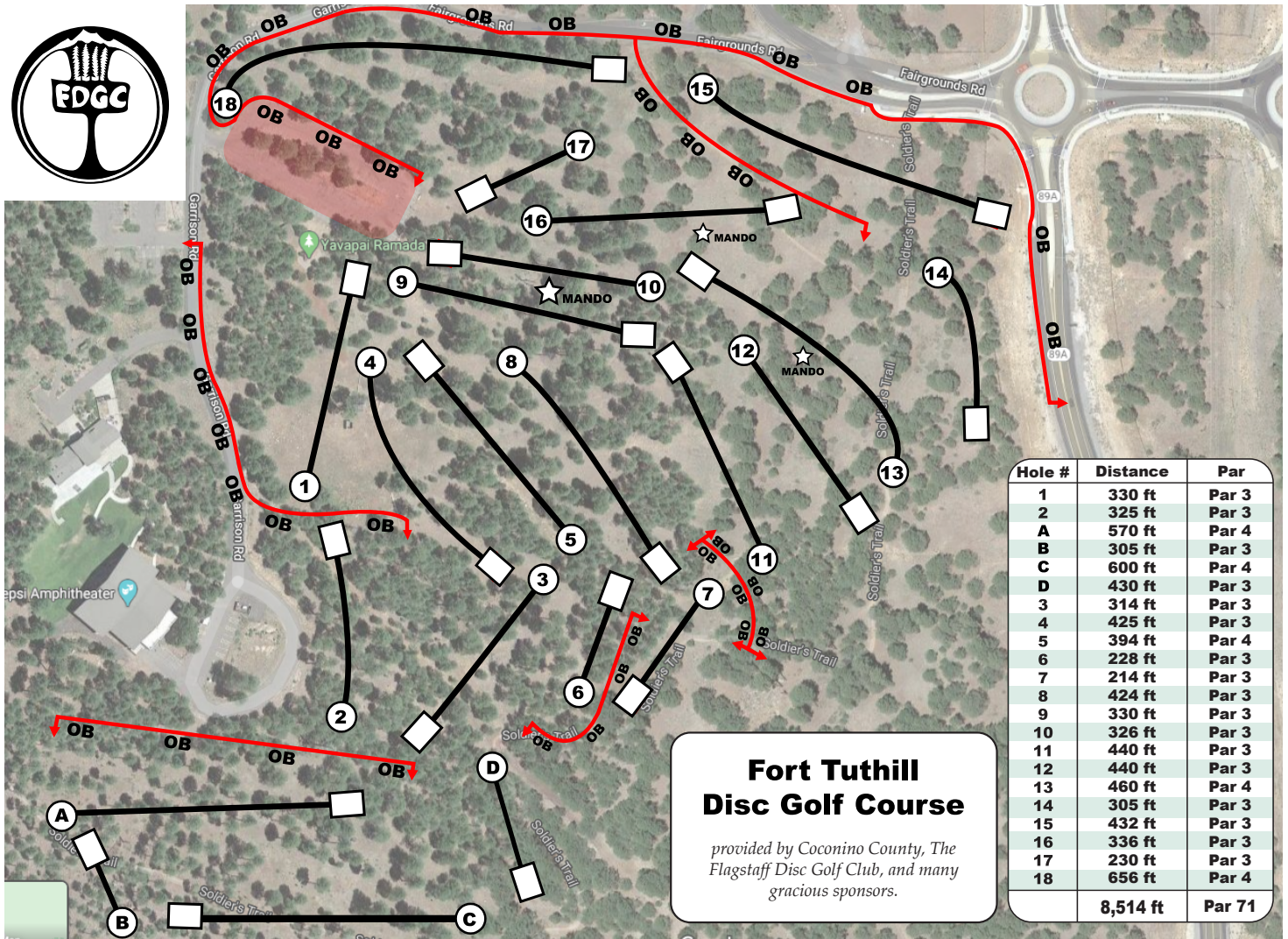
Hole 8 - Be on the lookout for stray drives coming in from hole 7.

Hole 10 - B & C pool tees off from the long concrete pad, D pool tees off from the short concrete pad. Base off fence and beyond is OB. Take it from where it was last in bounds.

Hole 13 - Base of fence and beyond is OB. Take it from where it was last in bounds.

Fort Tuthill DGC

A pool - 22 Holes (Par 71) • B pool - Normal 18 holes (Par 56)



Course Rules:

All asphalt and beyond is out of bounds. Comes into play on holes 1, 9, 14, 15 & 18.

Hole 1 - OB street on the right and OB long marked by string. Take from last in bounds.

Hole 2 - OB string long. Take from last in bounds.

Hole 6 - OB string long and left. Take from last in bounds.

Hole 7 - OB string long. Take from last in bounds.

Hole 9 - Mandatory in play. Play left of marked tree. Drop zone by base of Mando.

Hole 10 - Mandatory in play. Play right of marked tree. Drop zone by base of Mando.

Hole 11 - OB string long. Take from last in bounds.

Hole 13 - Mandatory in play. Play left of marked tree. Drop zone by base of Mando.

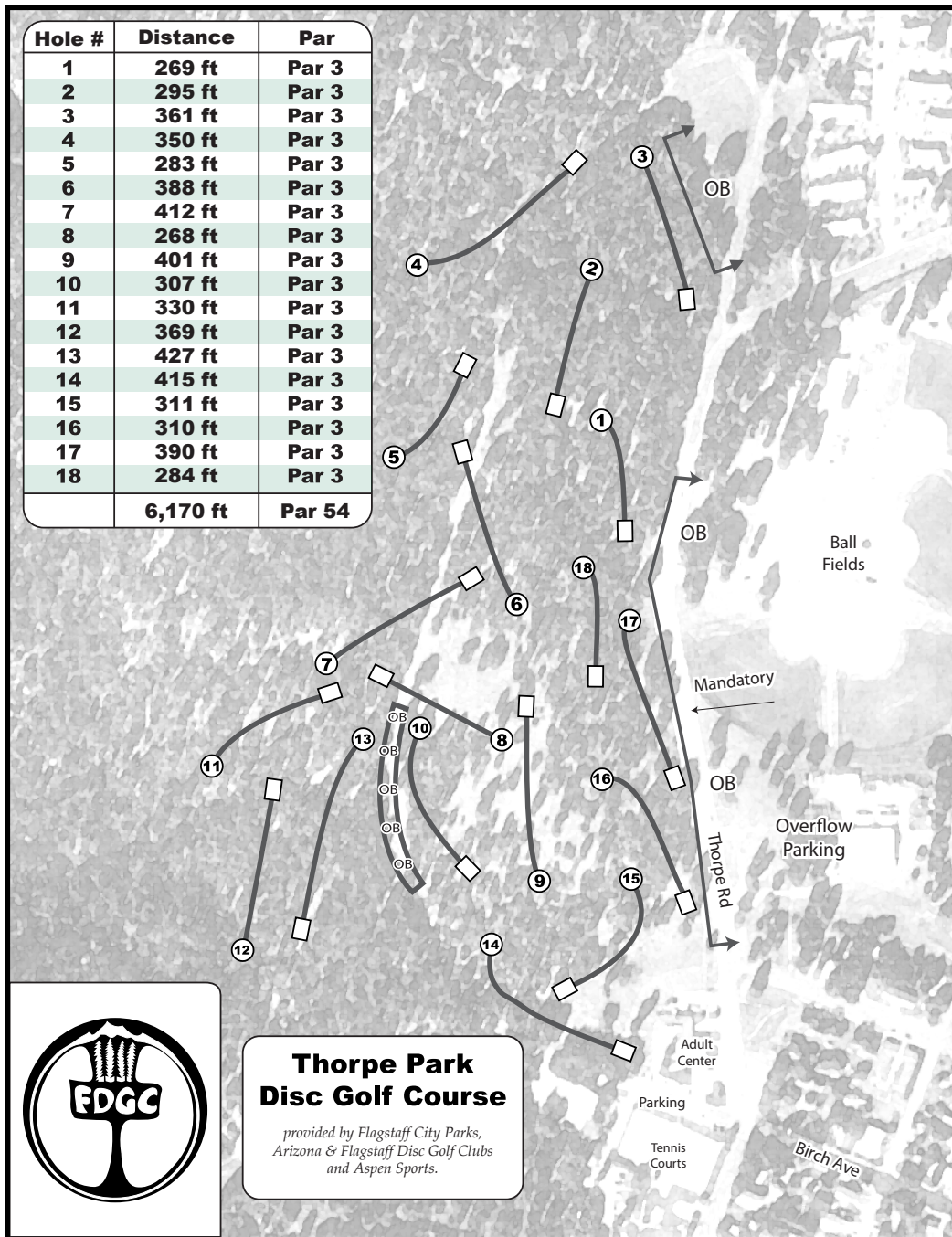
Hole 15 - OB string marks the road on left and road on left marked by asphalt. Play from last in bounds.

Hole 16 - Mandatory in play. Play right of marked tree. Drop zone by base of Mando.

Hole 18 - OB road on left and deep is OB. Parking lot is OB. Play from last in bounds.

Thorpe Park

C & D pool



Course Rules:

Please be cautious of casual park users. Whenever throwing across the road make sure to check for hikers and bikers.

Hole 3 - OB fence on the right. Take from last in bounds.

Hole 10 - OB string marks the road and beyond. Take from last in bounds.

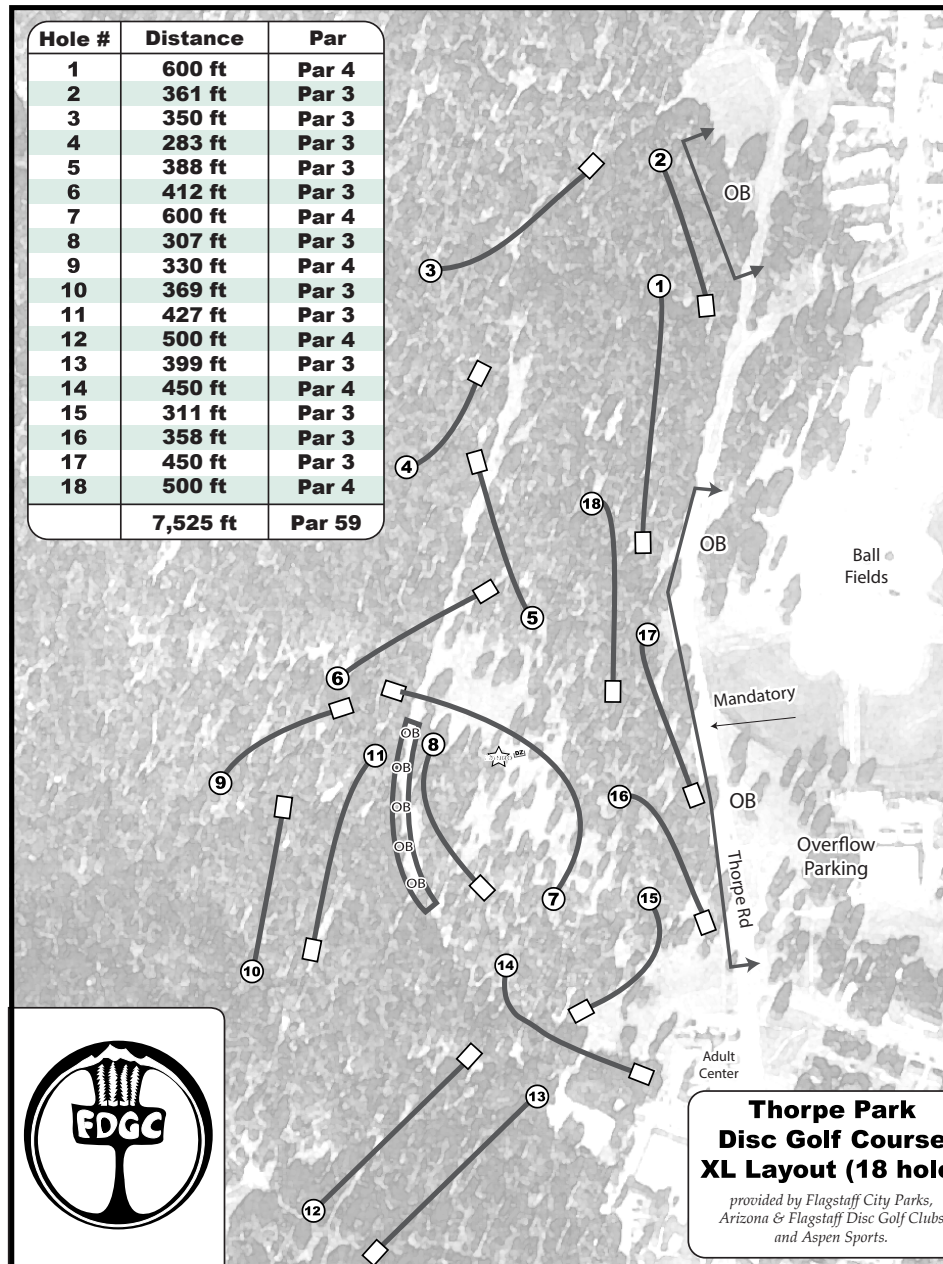
Hole 13 - OB string marks the road and beyond. Take from last in bounds.

Hole 16 - OB road and beyond marked by the asphalt. Take from last in bounds.

Hole 17 - Mandatory in play. Play left of marked tree. Road and beyond OB marked by asphalt.

Thorpe Park XL

A, B & C pool



**Thorpe Park
Disc Golf Course
XL Layout (18 hole)**

*provided by Flagstaff City Parks,
Arizona & Flagstaff Disc Golf Clubs
and Aspen Sports.*

Course Rules & notes:

Please be cautious of casual park users. Whenever throwing across the road make sure to check for hikers and bikers.

Hole 1 - Plays from normal 1's pad to normal 2's basket.

Hole 2 - OB fence on the right. Play from last in bounds.

Hole 7 - Plays from normal 8's pad to normal 9's basket. Mandatory left of marked tree. Drop zone at the base of the tree.

Hole 8 - OB road and beyond marked by the string. Take from last in bounds.

Hole 11 - OB road and beyond marked by the string. Take from last in bounds.

Hole 16 - Road and beyond is OB, Marked by asphalt. Play from last in bounds.

Hole 17 - Mandatory left of marked tree, if missed, proceed to DZ. Road and beyond is OB, play from last in bounds.