

Fort Tuthill Disc Golf Course

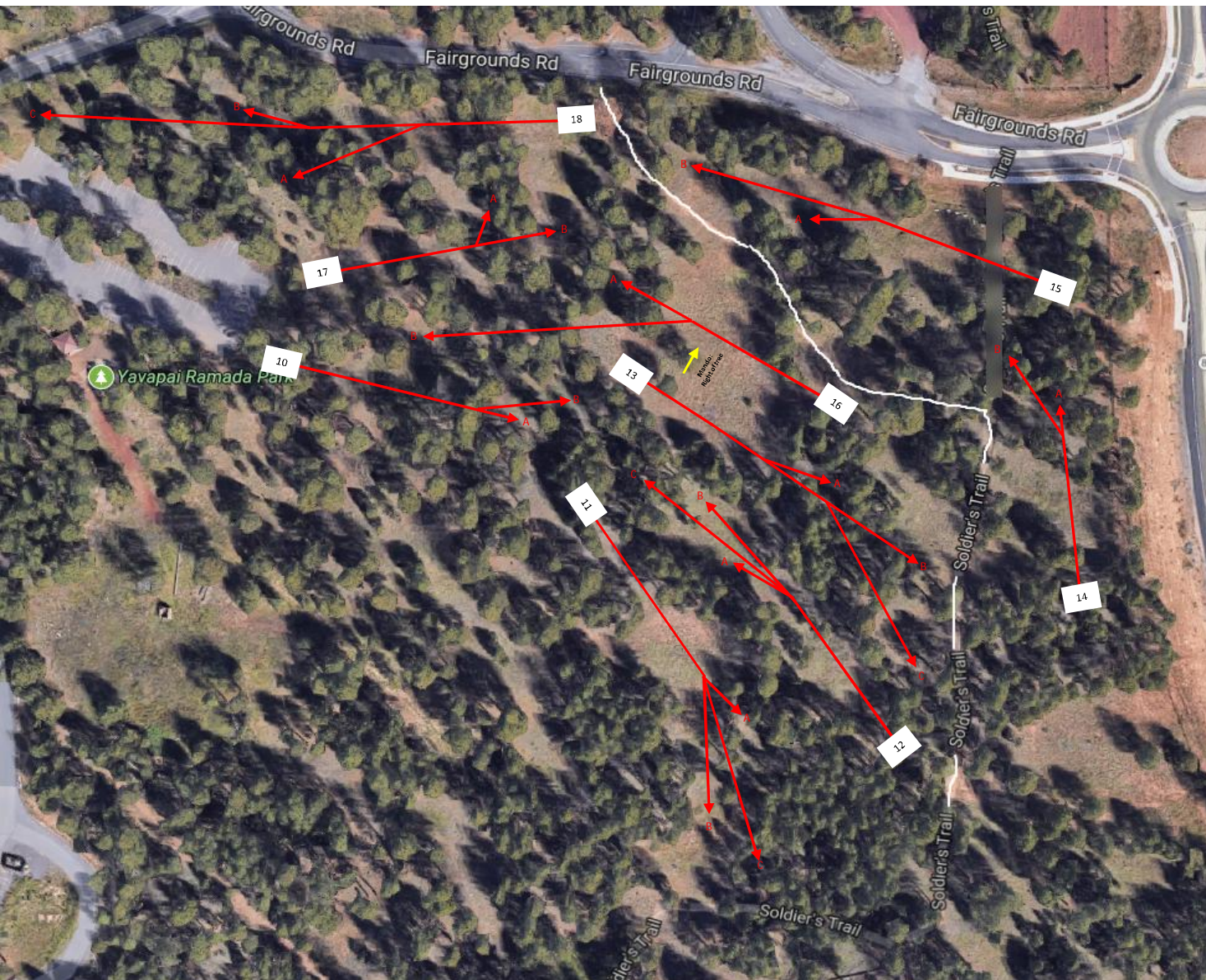
Proposed Front 9

Pin\Tee:	A	B	C
Hole 1	300	315	350
Hole 2	215	290	315
Hole 3	210	315	385
Hole 4	270	300	410*
Hole 5	250	320	
Hole 6	190	215	
Hole 7	195	210	
Hole 8	320	420	525*
Hole 9	345		

*Designates Par 4

Out of Bounds – Parking Lot, Fence, Road, and discs which land on –or beyond the other side of the Soldier Trail from your tee box.

Caution - As a County park, watch for Hikers and Bikers, especially along the designated trail. Allow them to safely clear before throwing.



Fort Tuthill Disc Golf Course

Proposed Back 9

Pin\Tee:	A	B	C
Hole 10	265	300	
Hole 11	290	380	475*
Hole 12	275	365	410*
Hole 13	275	400*	500*
Hole 14	270	325	
Hole 15	290	435	
Hole 16	275	500*	
Hole 17	250	285	
Hole 18	325	380	580*

*Designates Par 4

Out of Bounds – Parking Lot, Fence, Road, and discs which land on –or beyond the other side of the Soldier Trail from your tee box.

Caution - As a County park, watch for Hikers and Bikers, especially along the designated trail. Allow them to safely clear before throwing.